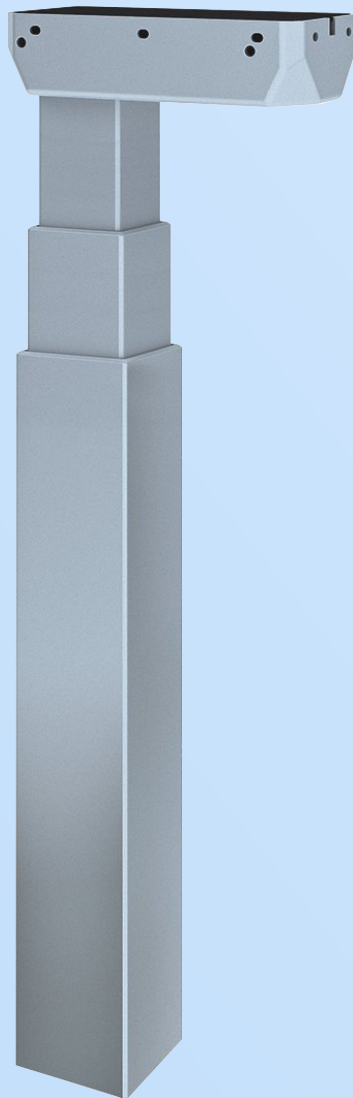


Data sheet

Lifting Column JS36DS5-3-S



Data sheet

JS36DS5-3-S

- JS36DS5-3-S is a square shape 3-segment no hole lifting column, the optimum choice for a wide range of desk applications. The design is new and clean. Compared with the JS36DS5-2-S, the range can be adjusted to meet the needs of more customers. The JS36DS5-3-S has the same size of outer tube and mounting holes as the JS36DS5-2-S, so it can be used with universal frames and table feet; and it is available in several standard colours to fit into a wide range of desk designs.
- The function of anti-collision minimize the risk of damages when desk collision with an obstacle.
- JS36DS5-3-S is compatible with all the standard Jiechang control boxes, and ensures a very low and pleasant noise level, and steady movement. Furthermore, the system has a very low standby power consumption less than 0.1W.



Features

- With 1.5mm thickness square tube and 3mm optimized motor housing design for extra strength and stability.
- The tube is no hole design
- The single column max load capacity: 800N
- Fit with JCB35N series Jiechang control boxes to realize max speed 35mm/s
- Low noise level <50dB
- Max. Bending moment: 150N.m
- Standard installation length: 560mm
- Standard stroke length: 650mm
- Outer tube size: 75×75mm of square shape
- Motor housing dimension: 190×96×48mm
- Motor: Jiechang design high power motor
- Hall sensor enabling parallel drive
- Surface: Powder coating with standard color: White (RAL9016), Black (RAL9005), Grey (RAL7045)

Option

- Customized colours
- Compatible with several different styles of feet
- PVC-free column
- Bracket for crossbar

Usage

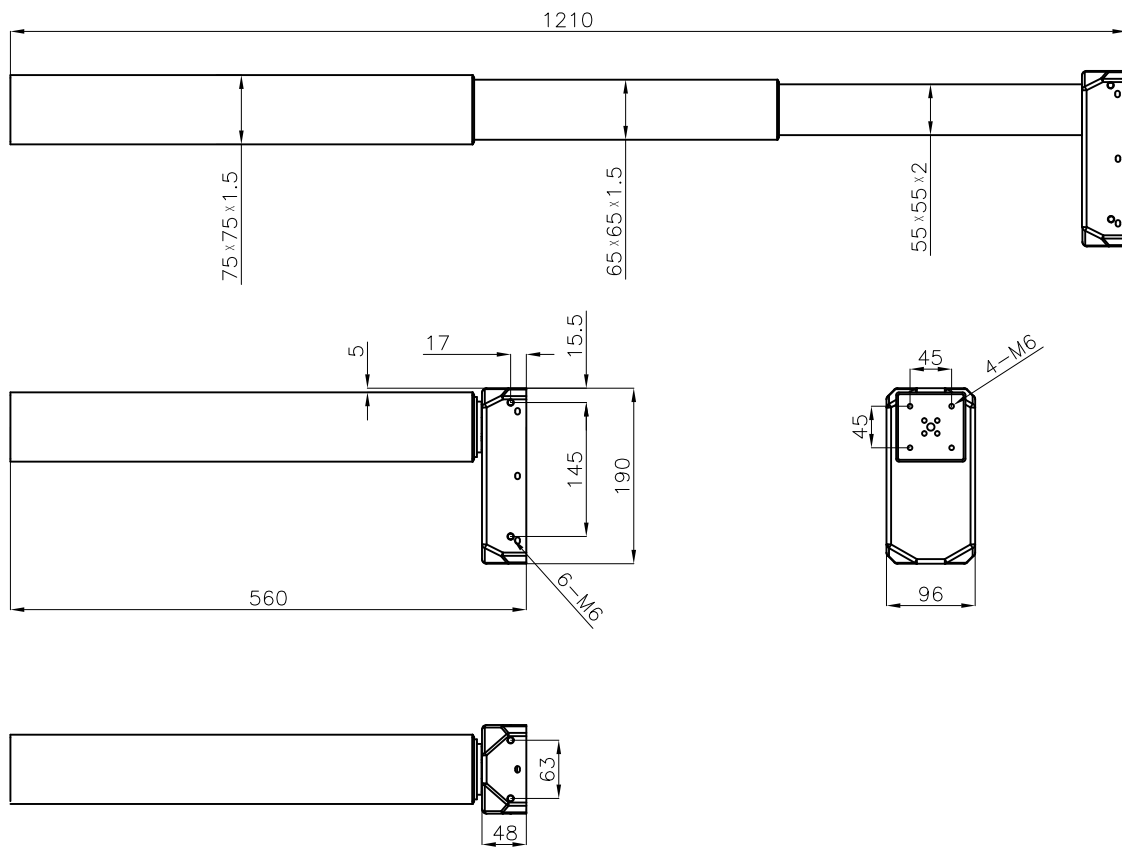
- Single or 2, 3, or 4 parallel drive or even multi-parallel with up to 12 columns, and can fit with Jiechang TS, TT, TF standard frame.
- Compatible with Jiechang control box: JCB35N1, JCB35N2, JCB35N3 JCB35N4
- Duty cycle: 10 %, Max. 2 minutes operation/Min. 18minutes rest of continuous use at full load
- Working environment: Indoor
- Storage and transport temperature :-10°C + 70°C

Technical specifications

Type	Rated load (N)	Self locking (N)	Typical current at rated Load (A)	Typical max speed 0 load~ Rated load (mm/s)	Duty cycle	Stroke length (mm)	Built-in length (mm)
JS36DS5-3-S	800	1200	5	35	10%	650	560

Note: The measurements above are made in connection with the control box JCB35N series.

Dimensions



Ordering Key

JS36D S5 - 3 - S - 650 / 560 - 0 - S

	Color	H=White B=Black S=Gray
	Pre-weld bracket size & location	The column stands without bracket
	Installation length	560/650
	Stroke length	650/500
	Stand or upside down	R=Reverse S=Stand
	Segment	2=Two-segment 3=Three-segment
	Tube size	S5=75X75X1.5 65X65X1.5 55X55X2
	JS36D series lifting column type	JS36Z